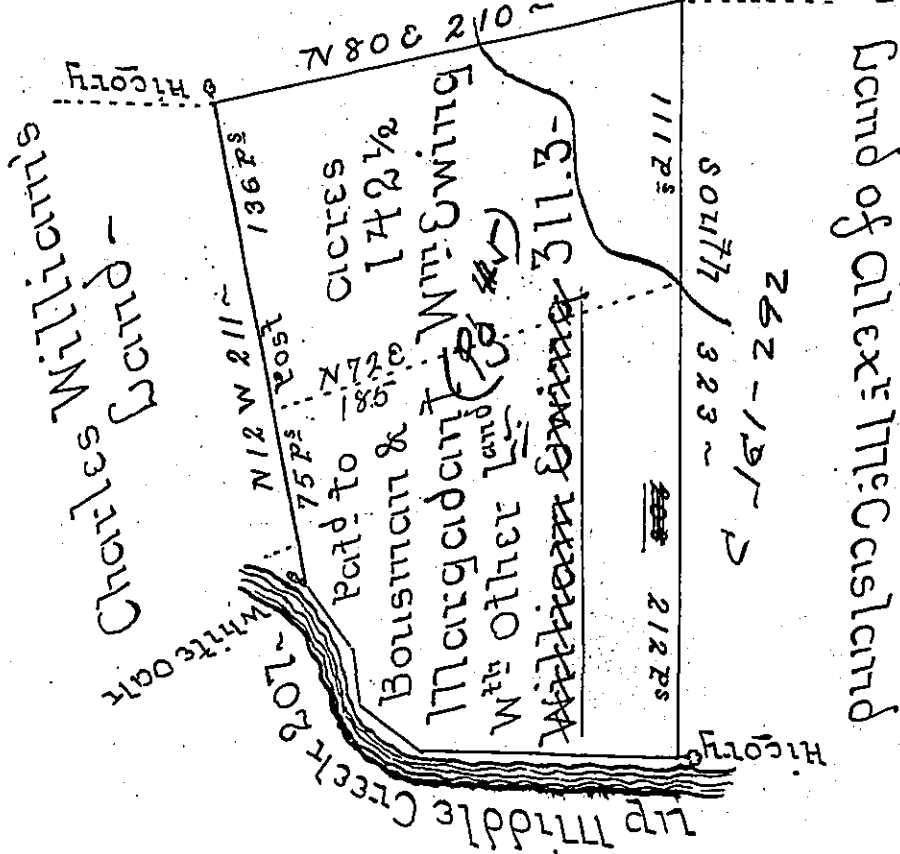


By vacant land

white oak
beginning



Courses and Distances
up Middle Creek

N 88 W 113 ~

N 48 W 34 ~

N 10 W 24 ~

N 35 W 36

207

The Draught of a Tract of Land called _____
 situate on Middle Creek in the County of Cumberland
 Containing Three Hundred & thirty six Perches with
 the usual Allowance of six Acres Percent; (obl) Roads Sur-
 vey'd the 15th day of October Anno Dom: 1769 (obl) Pur-
 suance of an Order of Survey to William Ewing Bearing
 Date at Philad^a the 31st day of March Anno Dom: 1784
 To John Lukens Esq 59 } P- Wm MacLay US
 of Pennsylvania)

Rev^d Doc^r Ewing - finding the Warrant to Hambright
 on which Bousman & Margaret Patented being
 much older than his Location proposed to Re-
 linquish that part (altho' he paid for the whole)
 and take a Patent for the 142 1/2 w^{ch} is Clear

IN TESTIMONY that the above is a copy of the original remaining on file in
 the Department of Internal Affairs of Pennsylvania, made
 conformably to an Act of Assembly approved the 16th day of
 February, 1833, I have hereunto set my Hand and caused
 the Seal of said Department to be affixed at Harrisburg,
 this nineteenth day of October 1904.

George R. Brown
 Secretary of Internal Affairs.